



# Specification

**CLAA070LC03CW**  
**7.0" / 800x480 / TTL / CCFL**

**Version October 2007**

## CONTENTS

<b>1. OVERVIEW</b> .....	<b>3</b>
<b>2. ABSOLUTE MAXIMUM RATINGS</b> .....	<b>4</b>
<b>3. ELECTRICAL CHARACTERISTICS</b> .....	<b>5</b>
3.1 TFT LCD Power Supply Voltage .....	5
3.2 TFT-LCD Power Consumption .....	5
3.3 Power 、 Signal sequence .....	6
3.4 Backlight.....	6
<b>4. INTERFACE CONNECTION</b> .....	<b>8</b>
4.1 CN1 .....	8
4.2 CN2.....	9
<b>5. INPUT SIGNAL(DE ONLY MODE)</b> .....	<b>10</b>
5.1 Timing Specification(De only mode).....	10
5.2 Timing Chart.....	10
5.3 Color Data Assignment.....	11
<b>6. BLOCK DIAGRAM</b> .....	<b>12</b>
<b>7. MECHANICAL DIMENSION</b> .....	<b>13</b>
7.1 Front Side .....	13
7.2 Rear Side .....	13
<b>8. OPTICAL CHARACTERISTICS</b> .....	<b>14</b>
<b>9. RELIABILITY TEST</b> .....	<b>16</b>
9-1. Temperature and humidity .....	16
9-2. Shock and Vibration.....	16
9-3. Judgment standard .....	16

## 1. OVERVIEW

CLAA070LC03CW is 7" color TFT-LCD(Thin Film Transistor Liquid Crystal Display)module composed of LCD panel,driver ICs,control circuit,and backlight.

The 7.0"screen produces a high resolution image that is composed of 800×480 pixel elements in a stripe arrangement.Display 262K colors by 6 Bit R.G.B signal input.Inverter for backlight is not included in this module.

General specifications are summarized in the following table:

ITEM	SPECIFICATION
Panel Size	7 inch(panel diagonal)
Display Area (mm)	152.4(W)×91.44(H)
Number of Pixels	800×3(H)×480(V)
Pixel Pitch (mm)	0.1905(H)×0.1905(V)
Color Pixel Arrangement	RGB vertical stripe
Display Mode	Normally white
Number of colors	262,144
Brightness(cd/m <sup>2</sup> )	280nit(typ)
Response Time (Tr+Tf)	20ms
Outline Dimension(in mm)	165.0(W)×104.0(H)×5.5(D)
Viewing Angle(BL on,CR≥10)	140 degree(H) , 110degree(V)
Power consumption	2.7W(Typ)
BL unit	CCFL , 1 lamp
Electrical Interface(data)	TTL
Viewing Direction	6 o'clock
Surface Treatment	Anti-Glare , Hardness:3H
Weight(g)	128(g)

## 2. ABSOLUTE MAXIMUM RATINGS

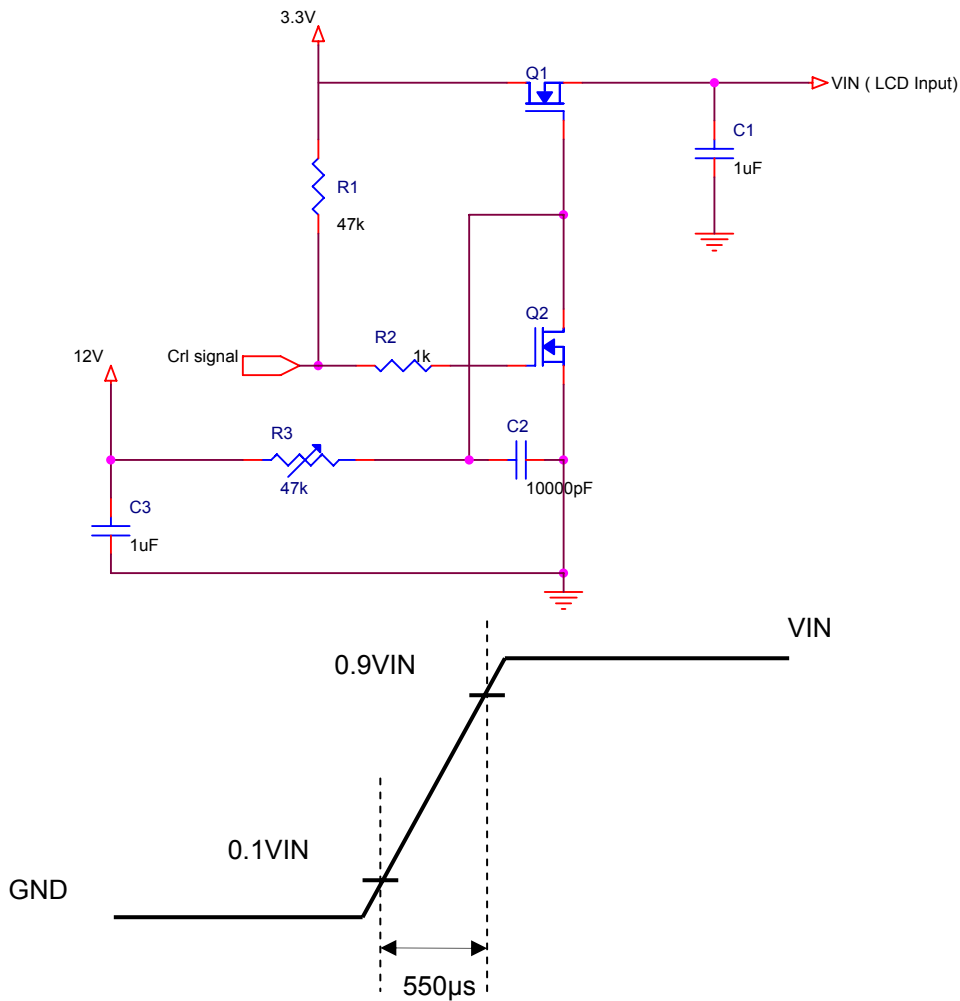
Item	Symbol	Min.	Max.	Unit	Note
Power Supply Voltage	Vcc	-0.3	4.6	V	
Lamp Voltage	VL	-	484	Vrms	
Lamp Current	IL	4.0	8.0	mArms	
Lamp Frequency	FL	30	80	KHz	
Static Electricity	VESDc	-200	200	V	【Note1】
	VESDm	-15K	15K		
ICC Rush Current	IRUSH	-	1	A	【Note2】
Discharge Time Lag	TD		1	sec	【Note3】

**【Note1】**

Test Condition: IEC 61000-4-2 ,  
 VESDc : Contact discharge to input connector  
 VESDm : Discontact discharge to module

**【Note2】**

Control signal:High(+3.3V)→Low(GND)  
 Supply Voltage of rising time should be from R3 and C2 tune to 550 us.



**【Note3】**

The time needed to start discharge when the over --Vrms voltage is continuously applied to both ends of the lamp. Before testing, the lamp is left in the dark room (ambient temperature: 25+/-2° C, ambient illuminance: less than 0.1 lux) for 24Hr after lighted for 1 minute at lated lamp current.

### 3. ELECTRICAL CHARACTERISTICS

#### 3.1 TFT LCD Power Supply Voltage

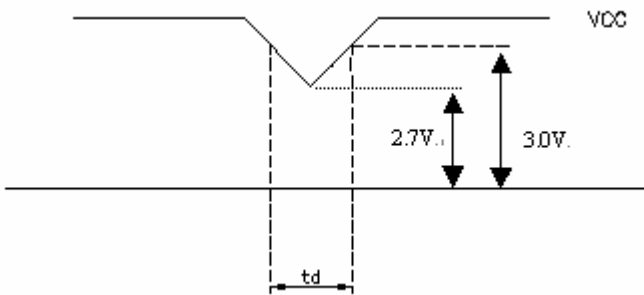
Ta=25°C

Item	Symbol	Min.	Typ	Max.	Unit	Note
Power Supply Voltage For LCD	Vcc	3.0	3.3	3.6	V	[Note1]
Logic Input Voltage	VIH	0.7VCC	-	VCC	V	
	VIL	GND	-	0.3VCC	V	

[Note1]

VCC –dip codition:

- 1) When  $2.7\text{ V} \leq VCC < 3.0\text{ V}$  ,  $t_d \leq 10\text{ ms}$ .
- 2) When  $VCC < 3.0\text{ V}$ , it works abnormal that must reset power.  
VCC dip conditions should follow VCC turn on conditions



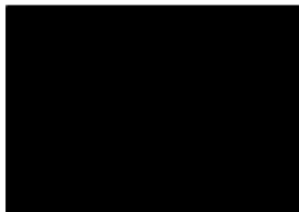
#### 3.2 TFT-LCD Power Consumption

Ta=25°C

Item	Symbol	Min.	Typ	Max.	Unit	Note
Power Supply Current For LCD	ICC	-	150	200	mA	[Note1]

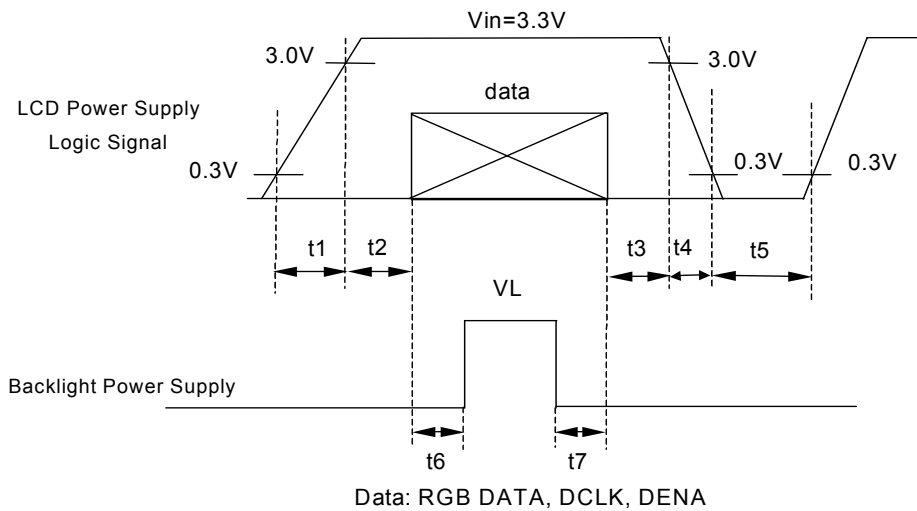
[Note1]

Typical: Under 64 gray pattern  
Maximum: Under black pattern



(a) 64 Gray Pattern (b) Black Pattern

### 3.3 Power & Signal sequence



$t1 \leq 10\text{ms}$        $1 \text{ sec} \leq t5$   
 $50\text{ms} \leq t2$        $200\text{ms} \leq t6$   
 $0 < t3 \leq 50\text{ms}$      $200\text{ms} \leq t7$   
 $0 < t4 \leq 10\text{ms}$

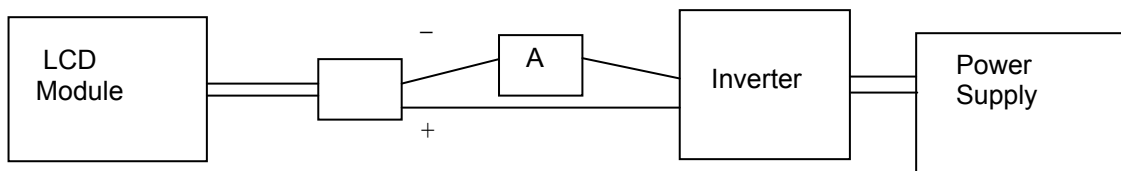
### 3.4 Backlight

Ta=25°C

Item	Symbol	Min.	Typ	Max.	Unit	Note
Lamp Voltage	VL	-	400	440	Vrms	*1) IL=5.5mA
Lamp Current	IL	5.0	5.5	6.0	mArms	*1) *2)
Lamp Frequency	FI	30	-	80	kHz	*4)
Lamp life time	LT	20,000	-	-	Hr	*1) *2) *3) IL=5.5mA , operation
Turn on and off life	-	100,000	-	-	Times	*1) *2) *3) IL=5.5mA , operation , time cycle 30s
Start Lamp Voltage	Ta=0°C	-	-	1050	Vrms	*5)
	Ta=25°C	-	-	800		
Power Consumption	PBL	-	2.2	-	Watt	VL*IL , IL=5.5mA/1 Lamp

[Note]

- \*1) Table of specifications are definition of single lamp.
- \*2) Lamp Current measurement method (The current meter is inserted in cold line)



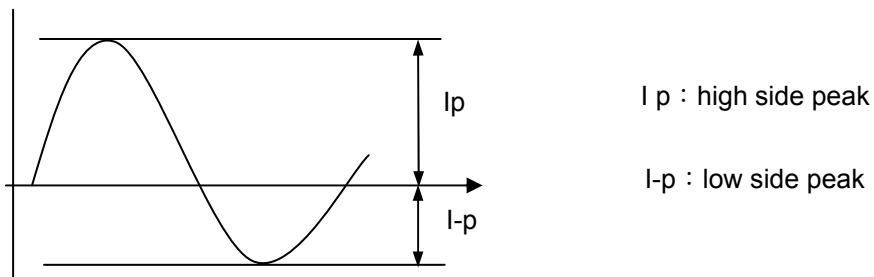
- \*3) Definition of the lamp life time : Luminance(L) under 50% of specification starting lamp voltage.
- \*4) 1.Frequency in this range can mala the characteristics of electric and optics maintain in ±10% except hue.  
2.Lamp frequency of inverter may produce interference with horizontal synchronous frequency (or vertical synchronous frequency),and this may cause ripple noise on the display. Therefore, please adjust inverter

frequency, and keep inverter as far from module as possible or use electronic shielding between inverter and module to avoid the interference.

- \*5) 1.Starting Lamp Voltage: Vs = initial value Vs  
2.Definition of starting lamp voltage means max. voltage of starting lamp. We suggest the inverter starting voltage greater then max. voltage of starting lamp to certify starting lamp stability.

\*6) If the driving waveform of lamp is asymmetric, the distribution of mercury inside the lamp tube will become unequally or will deplete the Ar gas in it. Then it may cause the abnormal phenomenon of lighting-up. Therefore, designers have to try their best to for fill the conditions under the inverter designing-stage as below:

- The degrees of unbalance :  $< 10 \%$
- The ratio of wave height :  $< \sqrt{2} \pm 10 \%$



A : The degrees of unbalance =  $| I_p - I-p | / I_{rms} \times 100 (\%)$

B : The ratio of wave height =  $I_p \text{ (or } I-p) / I_{rms}$

## 4. INTERFACE CONNECTION

### 4.1 CN1

Connector type : 40pin / 0.5mm pitch / Bottom contact) : 089N40-000R00-G2

Pin NO.	SYMBOL	DESCRIPTION
1	$V_{SS}$	Ground
2	$V_{SS}$	Ground
3	NC	No Connection
4	$V_{CC}$	Power Supply
5	$V_{CC}$	Power Supply
6	$V_{CC}$	Power Supply
7	$V_{CC}$	Power Supply
8	NC	No Connection
9	DE	Data Enable Timing Signal
10	$V_{SS}$	Ground
11	$V_{SS}$	Ground
12	$V_{SS}$	Ground
13	B5	Blue Data 5 (MSB)
14	B4	Blue Data 4
15	B3	Blue Data 3
16	$V_{SS}$	Ground
17	B2	Blue Data 2
18	B1	Blue Data 1
19	B0	Blue Data 0 (LSB)
20	$V_{SS}$	Ground
21	G5	Green Data 5 (MSB)
22	G4	Green Data 4
23	G3	Green Data 3
24	$V_{SS}$	Ground
25	G2	Green Data 2
26	G1	Green Data 1
27	G0	Green Data 0 (LSB)
28	$V_{SS}$	Ground
29	R5	Red Data 5 (MSB)
30	R4	Red Data 4
31	R3	Red Data 3
32	$V_{SS}$	Ground
33	R2	Red Data 2
34	R1	Red Data 1
35	R0	Red Data 0
36	$V_{SS}$	Ground
37	$V_{SS}$	Ground
38	DCLK	Data Clock
39	$V_{SS}$	Ground
40	$V_{SS}$	Ground

Remarks:

- 1) NC Pin must be retain, this pin can't contact GND or other signal.
- 2) Vss Pin must ground contact , can not be floating.

#### 4.2 CN2

##### Back Light

Input connector type for back light : BHSR-02VS-1(JST)

Output connector type for Inverter: SM02-BHSS-1-TB

Pin No.	Symbol	function
1	CTH	VBLH(High-Voltage)
2	CTL	VBLL(Low-Voltage)

[Note]:VBLH-VBLL=VL

## 5. INPUT SIGNAL(DE ONLY MODE)

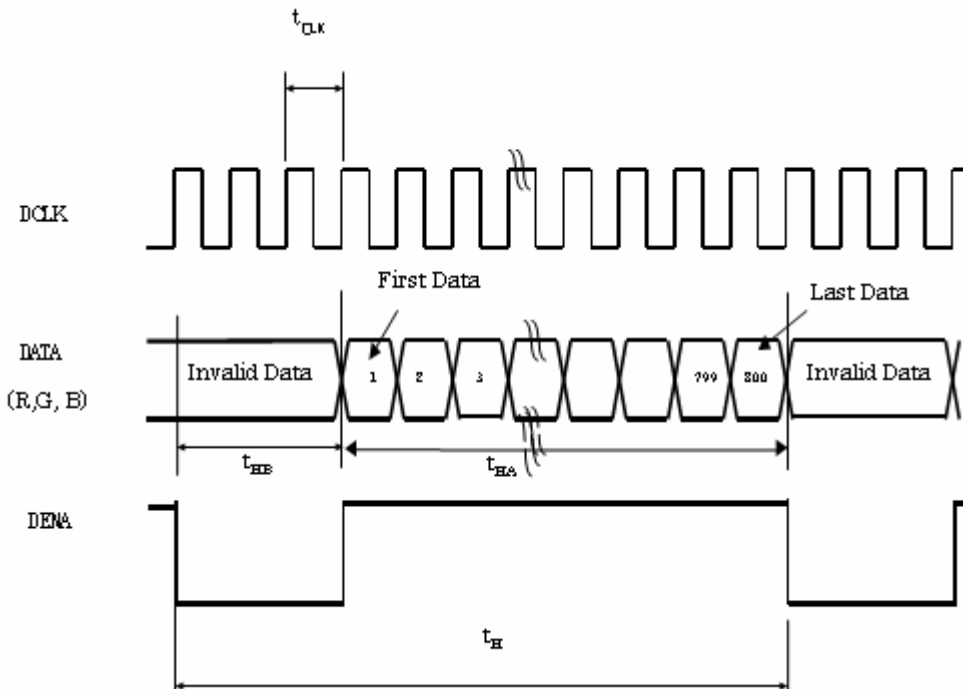
### 5.1 Timing Specification(De only mode)

	ITEM	SYMBOL	MIN.	TYP.	MAX.	UNIT	
DCLK	Dot Clock	1/tclk	25	27	32	MHz	
	Low Level Width	t <sub>WCL</sub>	6	-	-	ns	
	High Level Width	t <sub>WCH</sub>	6	-	-	ns	
DE	Setup Time	t <sub>DES</sub>	5	-	-	ns	
	Hold time	t <sub>DEH</sub>	10	-	-	ns	
	Horizontal Period	t <sub>H</sub>	850	900	950	t <sub>CLK</sub>	
	Horizontal Valid	t <sub>HA</sub>	800				
	Horizontal Blank	t <sub>HB</sub>	50	100	150		
		Vertical Period	t <sub>V</sub>	490	500	520	t <sub>HP</sub>
		Vertical Valid	t <sub>VA</sub>	480			
		Vertical Blank	t <sub>VB</sub>	10	20	40	
		Vertical Frequency	f <sub>V</sub>	55	60	65	Hz
		DATA	Setup Time	t <sub>DS</sub>	5	-	-
Hold Time	t <sub>DH</sub>		10	-	-		

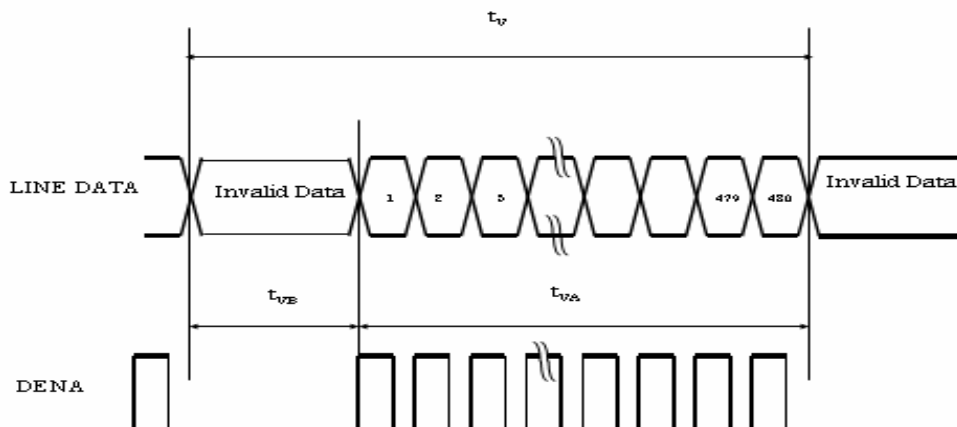
【Note1】 This module is operated by DE only mode.

### 5.2 Timing Chart

#### Horizontal Timing sequence



#### Vertical Timing sequence



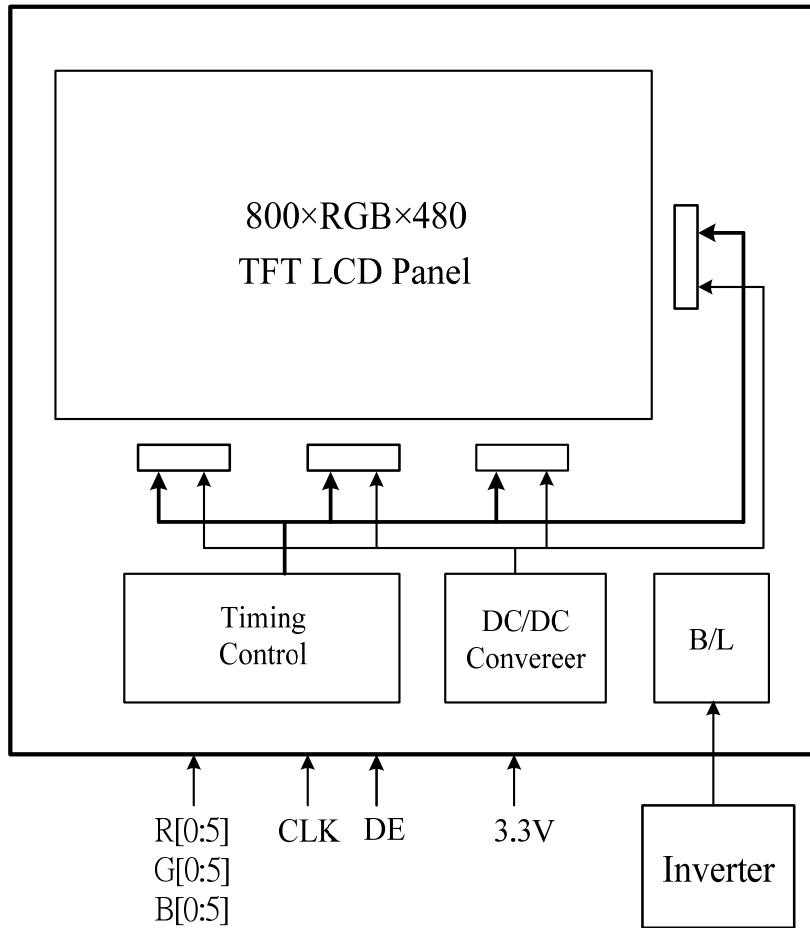
## 5.3 Color Data Assignment

COLOR	INPUT DATA	R DATA						G DATA						B DATA					
		R5	R4	R3	R2	R1	R0	G5	G4	G3	G2	G1	G0	B5	B4	B3	B2	B1	B0
		MSB					LSB	MSB					LSB	MSB					LSB
BASIC COLOR	BLACK	0	0	0	0	0	0	0	0	0	0	0	0	0	0	0	0	0	0
	RED(63)	1	1	1	1	1	1	0	0	0	0	0	0	0	0	0	0	0	0
	GREEN(63)	0	0	0	0	0	0	1	1	1	1	1	1	0	0	0	0	0	0
	BLUE(63)	0	0	0	0	0	0	0	0	0	0	0	0	1	1	1	1	1	1
	CYAN	0	0	0	0	0	0	1	1	1	1	1	1	1	1	1	1	1	1
	MAGENTA	1	1	1	1	1	1	0	0	0	0	0	0	1	1	1	1	1	1
	YELLOW	1	1	1	1	1	1	1	1	1	1	1	1	0	0	0	0	0	0
	WHITE	1	1	1	1	1	1	1	1	1	1	1	1	1	1	1	1	1	1
RED	RED(0)	0	0	0	0	0	0	0	0	0	0	0	0	0	0	0	0	0	0
	RED(1)	0	0	0	0	0	1	0	0	0	0	0	0	0	0	0	0	0	0
	RED(2)	0	0	0	0	1	0	0	0	0	0	0	0	0	0	0	0	0	0
	RED(62)	1	1	1	1	1	0	0	0	0	0	0	0	0	0	0	0	0	0
	RED(63)	1	1	1	1	1	1	0	0	0	0	0	0	0	0	0	0	0	0
GREEN	GREEN(0)	0	0	0	0	0	0	0	0	0	0	0	0	0	0	0	0	0	0
	GREEN(1)	0	0	0	0	0	0	0	0	0	0	0	1	0	0	0	0	0	0
	GREEN(2)	0	0	0	0	0	0	0	0	0	0	1	0	0	0	0	0	0	0
	GREEN(62)	0	0	0	0	0	0	1	1	1	1	1	0	0	0	0	0	0	0
	GREEN(63)	0	0	0	0	0	0	1	1	1	1	1	1	0	0	0	0	0	0
BLUE	BLUE(0)	0	0	0	0	0	0	0	0	0	0	0	0	0	0	0	0	0	0
	BLUE(1)	0	0	0	0	0	0	0	0	0	0	0	0	0	0	0	0	0	1
	BLUE(2)	0	0	0	0	0	0	0	0	0	0	0	0	0	0	0	0	1	0
	BLUE(62)	0	0	0	0	0	0	0	0	0	0	0	0	1	1	1	1	1	0
	BLUE(63)	0	0	0	0	0	0	0	0	0	0	0	0	1	1	1	1	1	1

[Note]

- (1) Definition of Gray Scale  
color(n) : n is series of Gray Scale  
The more n value is, the bright Gray Scale.
- (2) Data: 1-High, 0-Low

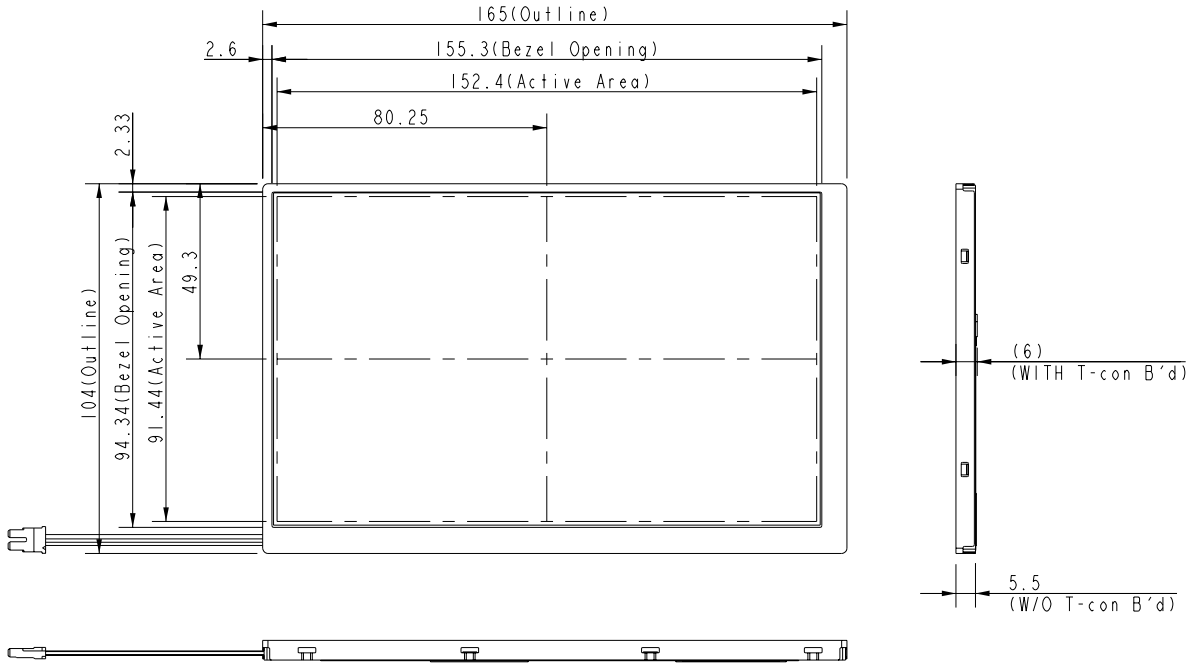
## 6. BLOCK DIAGRAM



## 7. MECHANICAL DIMENSION

### 7.1 Front Side

[Unit : mm]



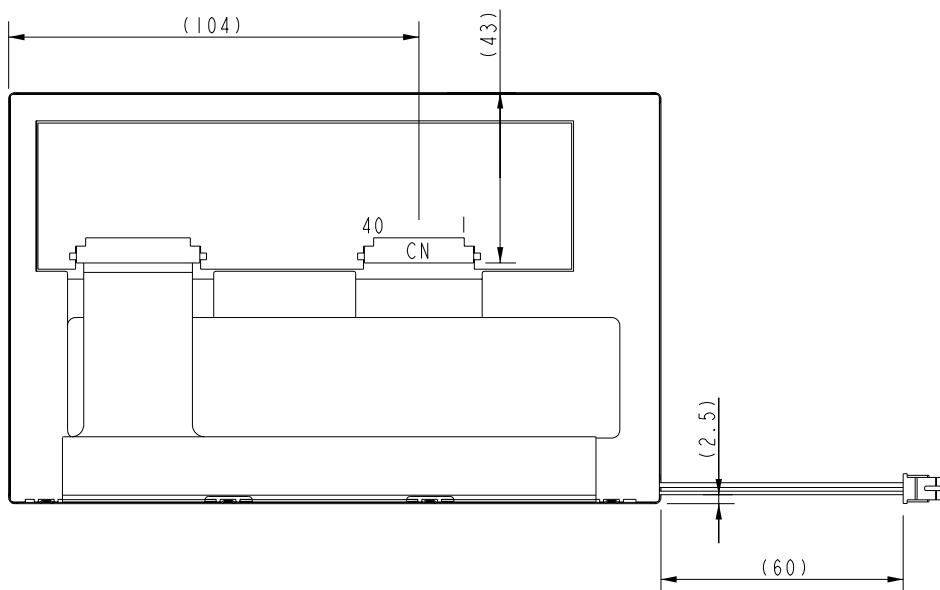
NOTE:

1.GENERAL TOLERANCE:  $\pm 0.3\text{mm}$

### 7.2 Rear Side

Length of Lamp wire= $60\pm 5\text{mm}$

[Unit : mm]



NOTE:

1.GENERAL TOLERANCE:  $\pm 0.3\text{mm}$

2.CCFL connector: BHSR-02VS-1 (JST)

3.CN: STARCONN 089N40-000R00-G2 (or other compatible connectors)

## 8. OPTICAL CHARACTERISTICS

VCC=3.3V

Ta=25°C

ITEM	SYMBOL	CONDITION	MIN.	TYP.	MAX.	UNIT	Remarks	
Constrast Ratio	CR	Point-5	300	400	--	--	*1)*2)*3)	
Luminance*)	Lw		--	280	--	cd/m <sup>2</sup>	*2)*3)	
Luminance Uniformity	ΔL		70	80		%	*2)*3)	
Response Time (White - Black)	Tr+ Tf		--	20	30	ms	*3)*4)	
Viewing Angle	Horizontal	$\phi$	CR ≥ 10 Point-5	120	140	--	°	*2)*3)
	Vertical	$\theta$		90	110	--	°	*2)*3)
Color Coordinate	White	Wx Wy	$\theta = \phi = 0^\circ$ Point-5	0.283 0.299	0.313 0.329	0.343 0.359	--	*2)*3)
	Red	Rx Ry		0.555 0.285	0.585 0.315	0.615 0.345		
	Green	Gx Gy		0.272 0.537	0.302 0.567	0.332 0.597		
	Blue	Bx By		0.122 0.118	0.152 0.128	0.182 0.158		

[Note]

- Brightness conditions :  $I_L = 5.5 \text{ mA}$  ,

\*1) Definition of contrast ratio :

These items are measured by BM-5A (TOPCON) in the dark room. (no ambient light).  
 Measure contrast ratio on the below 5 points (refer to figure1, #1~#5 point) and take the average value.  
 Contrast ratio is calculated with the following formula :  
 Contrast Ratio (CR)= (White) Luminance of ON ÷ (Black) Luminance of OFF

\*2) Definition of luminance :

These items are measured by BM-5A (TOPCON) in the dark room. (no ambient light).  
 Measure white luminance on the same 5 points and take the average value.  
 Definition of Luminance Uniformity:  
 These items are measured by BM-5A (TOPCON) in the dark room. (no ambient light)  
 Measure maximum luminance(L(MAX) )and minimum luminance (L(MIN) )on the 5 points as figure8-1  
 Luminance Uniformity is calculated with the following formula :

$$\Delta L = [L(\text{MIN})/L(\text{MAX})] \times 100$$

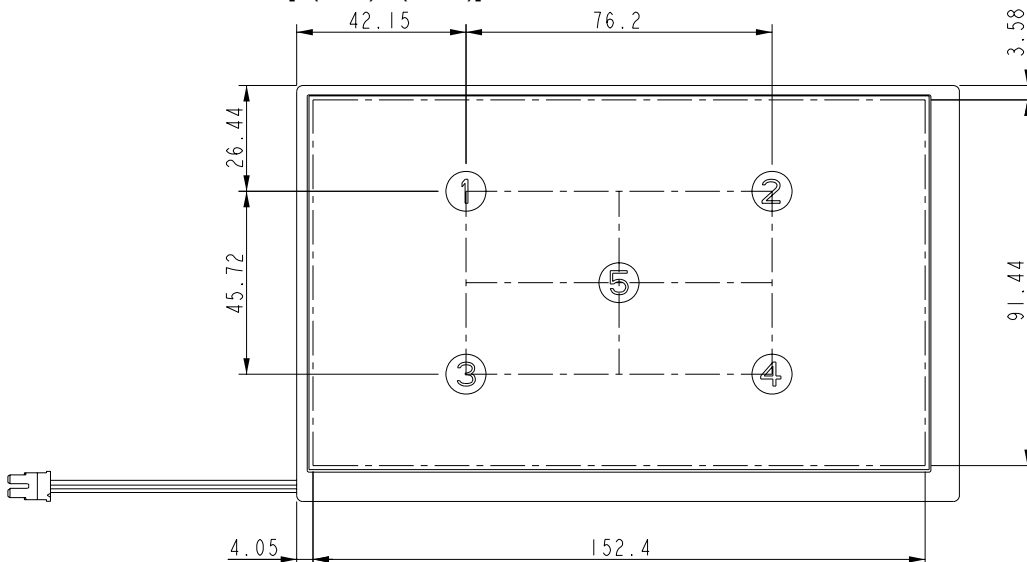


Fig8-1 Measuring point  
 Data Modul AG - www.data-modul.com

\*3) Definition of Viewing Angle( $\theta, \psi$ ), refer to Fig8-2 as below :  
 These items are measured by EZ-CONTRAST(ELDIM) in the dark room. (no ambient light).

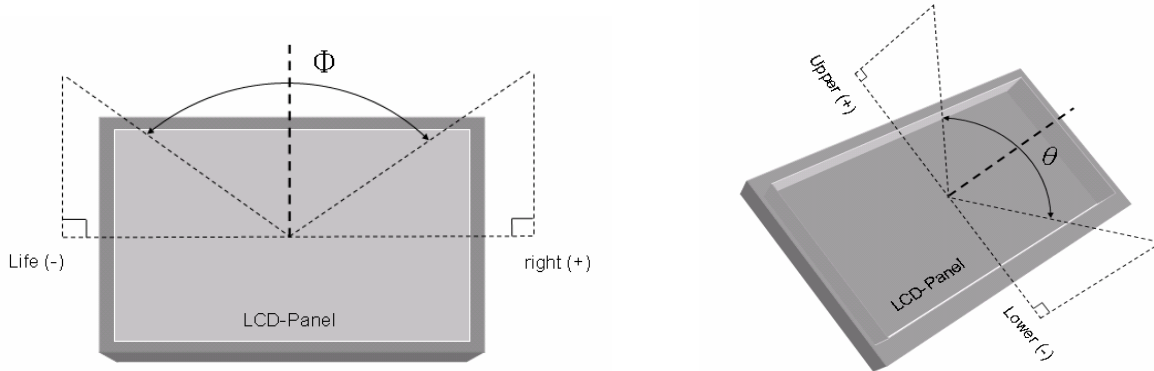


Fig8-2 Definition of Viewing Angle

\*4) Definition of Response Time.(White-Black)

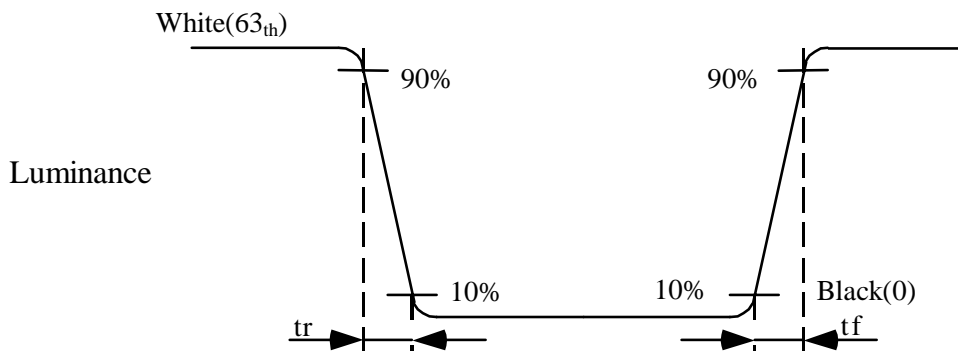


Fig8-3 Definition of Response Time(White-Black)

## 9. RELIABILITY TEST

### 9-1. Temperature and humidity

TEST ITEMS	CONDITIONS
High Temperature Operation	85°C , 240Hrs
High Temperature Storage	95°C , 240Hrs
High Temperature High Humidity Operation	60°C , 90%RH , 240Hrs
Low Temperature Operation	-30°C , 240Hrs
Low Temperature Storage	-40°C , 240Hrs
Thermal Shock	-30°C (0.5Hr) ~ 85°C(0.5Hr) , 200 cycles

### 9-2. Shock and Vibration

TEST ITEMS	CONDITIONS
Shock (Non-operation)	<ul style="list-style-type: none"> <li>● Shock level:980m/s<sup>2</sup>(equal to 100G)</li> <li>● Waveform:half sinusoidal wave,6ms.</li> <li>● Number of shocks:one shock input in each direction of three mutually perpendicular axes for a total of three shock inputs.</li> </ul>
Vibration (Non-operation)	<ul style="list-style-type: none"> <li>● Frequency range:8~33.3Hz</li> <li>● Stoke:1.3mm</li> <li>● Vibration:sinusodial wave,perpendicularaxis(both x,z,axis:2Hrs,y axis:4Hrs).</li> <li>● Sweep:2.9G,33.3Hz-400Hz</li> <li>● Cycle:15min</li> </ul>

### 9-3. Judgment standard

The Judgment of the above test should be made as follow:

Pass:Normal display image with no obvious non-uniformity and no line defect.Partial trasformation of the module parts should be ignored.

Fail:No display image,obvious non-uniformity,or line defect.



Data Modul Headquarters Munich  
Landsberger-Str. 322  
D-80687 Munich - Germany  
Tel.: +49-89-56017-0



Sales Office Duesseldorf  
Fritz-Vomfelde-Str. 8  
D-40547 Duesseldorf - Germany  
Tel.: +49-211-52709-0



Sales Office Hamburg  
Borsteler Chaussee 51  
D-22453 Hamburg - Germany  
Tel.: +49-40-42947377 - 0



Sales Office Stuttgart  
Friedrich-List-Str. 42  
D-70771 Leinfelden-Echterdingen  
Germany  
Tel.: +49-711-782385-0



Data Modul France, S.A.R.L.  
Bat B - Hall 204  
1-3 Rue des Campanules  
77185 Lognes - France  
Tel.: +33-1-60378100



Data Modul Italia, S.r.l.  
Regus Center Senigallia  
Via Senigallia 18/2  
20161 Milano - Italy  
Tel.: +39-02-64672-509



Data Modul Iberia, S.L.  
c/ Adolfo Pérez Esquivel 3  
Edificio Las Americas III Oficiana 40  
28230 Parque Empresarial  
Madrid Las Rozas - Spain  
Tel.: +34-916 366 458

Data Modul Ltd. / UK  
3 Brindley Place  
Birmingham B 12JB  
United Kingdom  
Tel.: +44-121-698-8641

Data Modul Inc. / USA  
1767-46 Veterans Memorial Highway  
Islandia NY 11749  
USA  
Tel.: +1-877-951-0800